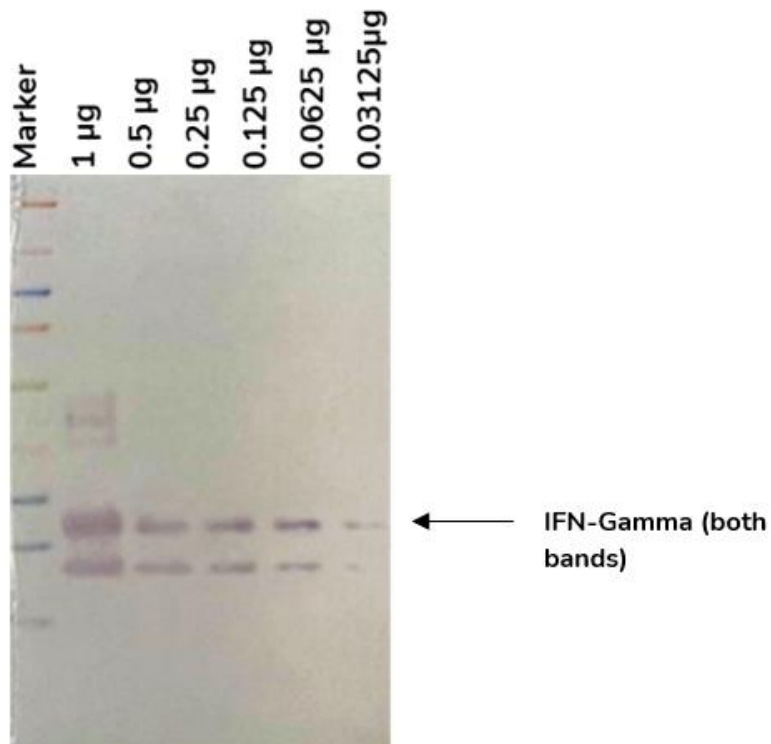


# Antibody Datasheet

## OVERVIEW AND PROPERTIES

---

<b>Product Name</b>	PtX™ Rabbit Anti-Interferon-Gamma Recombinant Antibody
<b>Catalogue Number</b>	CBT_A0004
<b>Expression Host</b>	<i>Nicotiana benthamiana</i> plants
<b>Clonality</b>	Monoclonal, recombinant
<b>Species and Isotype</b>	Rabbit IgG1
<b>Tag</b>	None
<b>Reporter Protein</b>	None
<b>Description</b>	This product is a full-length Rabbit IgG1 recombinant antibody specific to Interferon Gamma. It was produced in <i>Nicotiana benthamiana</i> plants via <i>Agrobacterium tumefaciens</i> -mediated infiltration.
<b>Target Name</b>	Interferon Gamma
<b>Verified Applications</b>	Western blot
<b>Dilution Range</b>	Western blot (1: 2 000 – 1: 7 500)
<b>Tested Species Reactivity</b>	Human
<b>Concentration</b>	1.0 mg/ml
<b>Form</b>	Liquid
<b>Colour</b>	Clear
<b>Preparation</b>	Ready to use
<b>Storage</b>	Short term (up to one week): 2 – 8 °C Long term: Aliquot and store at – 20 °C Store immediately. Aliquot and avoid multiple freeze thaw cycles.
<b>Storage Buffer</b>	0.1 M Phosphate Buffered Saline, pH 7.4 Preservative: None
<b>Purification Notes</b>	This product was purified using Protein A- affinity chromatography.
<b>Purity</b>	≥ 90 % as determined by SDS-PAGE
<b>General Notes</b>	If for any reason the product does not perform as specified, please contact our scientific support team for assistance by emailing <a href="mailto:techsupport@capebiologix.com">techsupport@capebiologix.com</a> . For Research Use only, unless otherwise indicated.

**IMAGES**

**Figure 1:** Western blot analysis of PtX™ Rabbit Anti-IFN-Gamma. Lanes 2 – 6: Varying amounts of antigen (IFN-Gamma) were run on the SDS-PAGE. Separated bands were transferred to the membrane and PtX™ Rabbit Anti-IFN-Gamma (1: 2 000) was used to detect the antigen. The two bands of IFN-Gamma were visualized following the addition of anti-rabbit secondary antibody with HRP and substrate. Our antibody was able to detect antigen amounts upwards of 30 ng (Lane 6).