

Antibody Datasheet

OVERVIEW AND PROPERTIES

Product Name	PtX™ Rabbit Anti-Interleukin-8 Recombinant Antibody
Catalogue Number	CBT_0042
Expression Host	<i>Nicotiana benthamiana</i> plants
Clonality	Monoclonal, recombinant
Species and Isotype	Rabbit IgG1
Tag	None
Reporter Protein	None
Description	This product is a full-length Rabbit IgG1 recombinant antibody specific to Interleukin 8 (IL-8). It was produced in <i>Nicotiana benthamiana</i> plants via <i>Agrobacterium tumefaciens</i> -mediated infiltration.
Target Name	Interleukin 8 (IL-8)
Verified Applications	Western blot, ELISA
Dilution Range	Western blot (1: 500 – 1: 2 000) ELISA (1: 500 – 1: 1 000)
Tested Species Reactivity	Human
Concentration	1.0 mg/ml
Form	Liquid
Colour	Clear
Preparation	Ready to use
Storage	Short term (up to one week): 2 – 8 °C Long term: Aliquot and store at – 20 °C Store immediately. Aliquot and avoid multiple freeze thaw cycles.
Storage Buffer	0.1 M Phosphate Buffered Saline, pH 7.4 Preservative: None
Purification Notes	This product was purified using Protein A- affinity chromatography.
Purity	≥ 95 % as determined by SDS-PAGE
General Notes	If for any reason the product does not perform as specified, please contact our scientific support team for assistance by emailing techsupport@capebiologix.com . For Research Use only, unless otherwise indicated.

IMAGES

PtX™ Rabbit Anti-IL-8 ELISA Dose Response

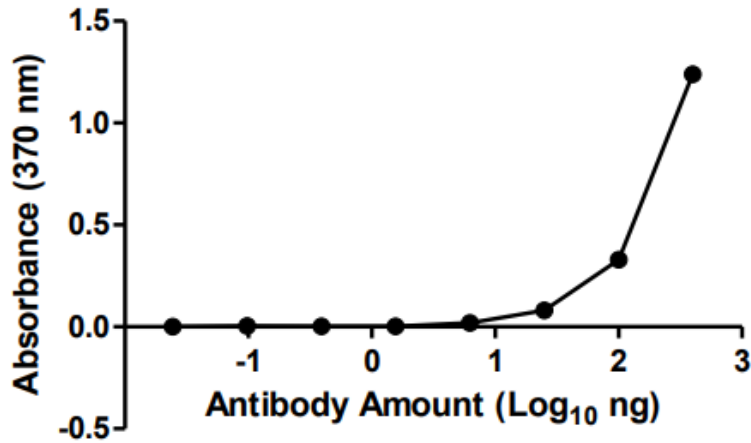


Figure 1. ELISA Dose Response curve using PtX™ Rabbit Anti-IL-8 Antibody from 4- 0.0002 ng/μl to detect 25 ng IL-8 antigen. Experiments were performed in triplicate, with error bars representing standard deviation (SD).

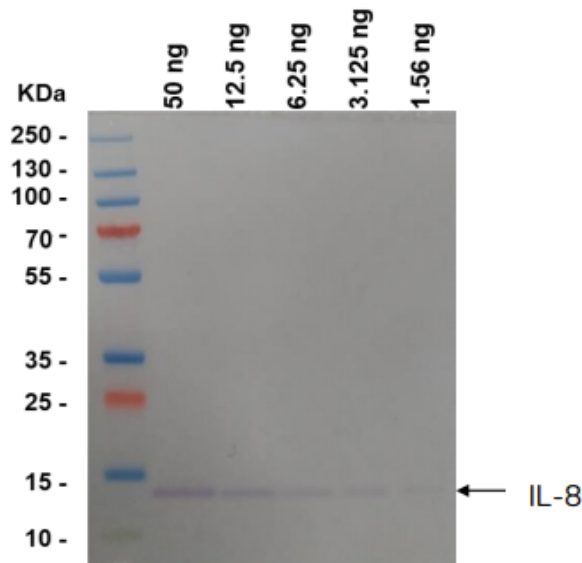


Figure 2. Western blot of decreasing amounts of IL-8 antigen (12 kDa) detected with PtX™ Rabbit Anti-IL-8 at 1: 10 000 and an HRP conjugated Anti-Rabbit secondary antibody.