

Antibody Datasheet

OVERVIEW AND PROPERTIES

Product Name	PtX™ Rabbit Anti-GST Recombinant Antibody
Catalogue Number	CBT_A0001
Expression Host	<i>Nicotiana benthamiana</i> plants
Clonality	Monoclonal, recombinant
Species and Isotype	Rabbit IgG1
Tag	None
Reporter Protein	None
Description	This product is a full-length Rabbit IgG1 recombinant antibody specific to the GST Tag. It was produced in <i>Nicotiana benthamiana</i> plants via <i>Agrobacterium tumefaciens</i> -mediated infiltration.
Target Name	Glutathione-S-Transferase (GST)
Verified Applications	Western blot, ELISA
Dilution Range	Western blot (1: 5 000-1: 10 000) ELISA (1: 20 000-1: 100 000)
Tested Species Reactivity	N/A
Concentration	1.0 mg/ml
Form	Liquid
Colour	Clear to light yellow
Preparation	Ready to use
Storage	Short term (up to one week): 2 – 8 °C Long term: Aliquot and store at – 20 °C Store immediately. Aliquot and avoid multiple freeze thaw cycles.
Storage Buffer	0.1 M Phosphate Buffered Saline, pH 7.4 Preservative: None
Purification Notes	This product was purified using Protein A- affinity chromatography.
Purity	> 95 % as determined by SDS-PAGE 98.94% as determined by Mass Spectrometry
General Notes	If for any reason the product does not perform as specified, please contact our scientific support team for assistance by emailing techsupport@capebiologix.com . For Research Use only, unless otherwise indicated.

IMAGES

PtX™ Rabbit Anti-GST Antibody ELISA Dose Response

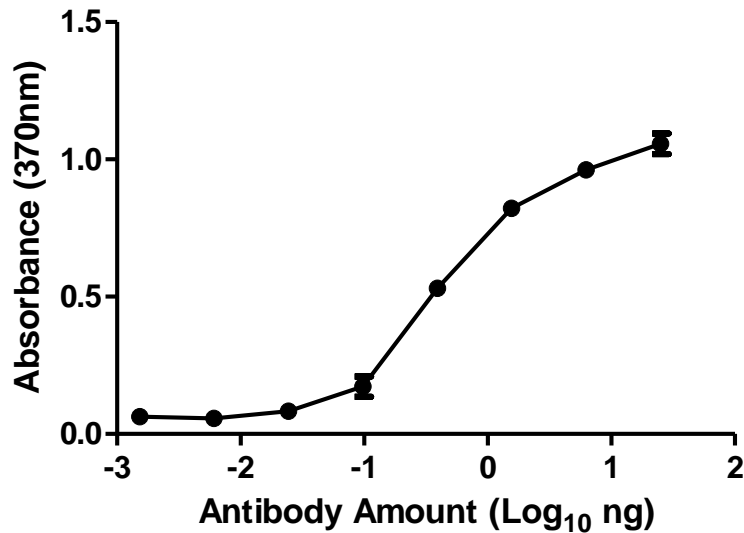


Figure 1. ELISA Dose Response curve using PtX™ Rabbit Anti-GST Antibody from 0,000015- 0,25 ng/uL to detect 25 ng GST protein. Experiments were performed in triplicate, with error bars representing standard deviation (SD).

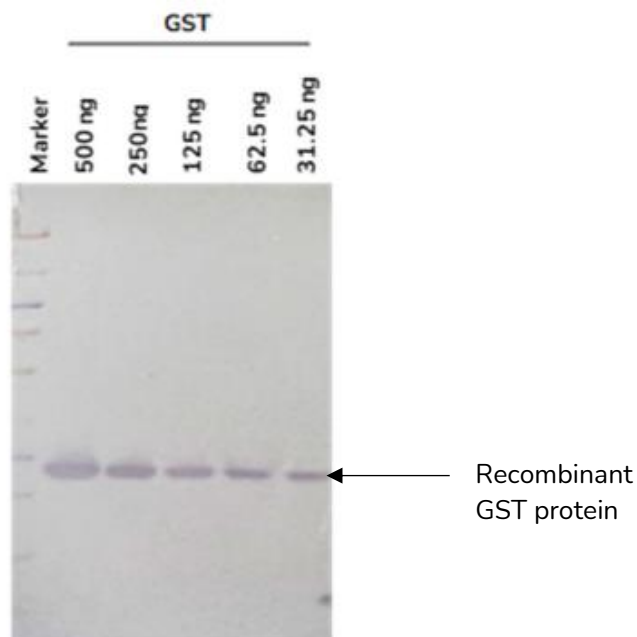


Figure 2. Western blot of decreasing amounts of GST antigen (28 kDa) detected with PtX™ Rabbit Anti-GST at 1:5 000 and an HRP conjugated Anti-Rabbit secondary antibody.