

Antibody Datasheet

OVERVIEW AND PROPERTIES

Product Name	PtX™ Rabbit Anti-Beta Tubulin (S11B) Recombinant Antibody
Catalogue Number	CBT_A0002
Expression Host	<i>Nicotiana benthamiana</i> plants
Clonality	Monoclonal, recombinant
Species and Isotype	Rabbit IgG1
Tag	None
Reporter Protein	None
Description	This product is a full-length Rabbit IgG1 recombinant antibody specific to Beta Tubulin. It was produced in <i>Nicotiana benthamiana</i> plants via <i>Agrobacterium tumefaciens</i> -mediated infiltration.
Target Name	Beta Tubulin
Verified Applications	Western blot, ELISA
Dilution Range	Western blot (1: 1 000 – 1: 5 000) ELISA (end user to determine)
Tested Species Reactivity	Human, Mouse
Concentration	1 mg/ml
Form	Liquid
Colour	Clear to light yellow
Preparation	Ready to use
Storage	Short term (up to one week): 2 – 8 °C Long term: Aliquot and store at – 20 °C Store immediately. Aliquot and avoid multiple freeze thaw cycles.
Storage Buffer	0.1 M Phosphate Buffered Saline, pH 7.4 Preservative: None
Purification Notes	This product was purified using Protein A- affinity chromatography.
Purity	95 % as determined by SDS-PAGE 97.67% as determined by Mass Spectrometry
General Notes	If for any reason the product does not perform as specified, please contact our scientific support team for assistance by emailing techsupport@capebiologix.com . For Research Use only, unless otherwise indicated.

IMAGES

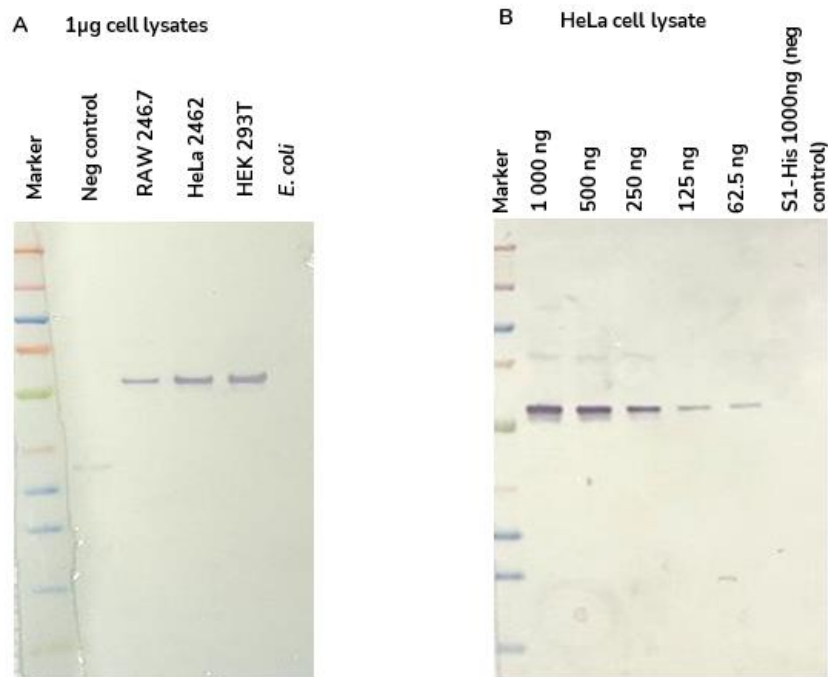


Figure 1. Western blot images of PtX™ Rabbit Anti-Beta Tubulin (S11B) used at 1: 5 000 to detect Beta tubulin protein (50 kDa) within cell lysates. A) 1 µg of various cell lysates B) Decreasing amounts (1 000 ng-62.5 ng) of HeLa cell lysates