

Protein Datasheet

OVERVIEW AND PROPERTIES

Product Name	PtX™ Protein A (HRP)
Synonyms	N/A
Catalogue Number	CBT_P0002
Expression Host	<i>Nicotiana benthamiana</i> plants
Original Gene species	Staphylococcus aureus (bacteria)
Tag	6xhis tag (C-terminal)
Reporter Protein	Horseradish peroxidase (HRP) (N-terminal)
Description	This product is a recombinant Protein A-HRP fusion antigen, fused at the genetic level. It was produced in <i>Nicotiana benthamiana</i> plants via <i>Agrobacterium tumefaciens</i> -mediated infiltration.
Protein Name	Protein A fused to HRP
Verified Species	Human IgG1 (++++)
Immunoglobulin Affinity	Rabbit IgG (+++) Mouse IgG1 (+) Mouse IgG2a (++++) Alpaca IgG2b (++++)
Verified Applications	Western blot, ELISA
Recommended conc range	Western blot (1: 1 000-1: 2 000) ELISA (1: 1 000-1: 5 000)
Concentration	1.0 mg/ml
Form	Liquid
Colour	Light reddish
Preparation	Ready to use
Storage	Short term (up to one week): 2 – 8 °C Long term: Aliquot and store at – 20 °C Store immediately. Aliquot and avoid multiple freeze thaw cycles.
Storage Buffer	0.1 M Phosphate Buffered Saline, pH 7.4 Preservative: None
Purification Notes	This product was purified using Immobilised metal affinity chromatography (IMAC) chromatography.
Purity	≥ 95 % as determined by SDS-PAGE 97.06% as determined by Mass Spectrometry
General Notes	If for any reason the product does not perform as specified, please contact our scientific support team for assistance by emailing techsupport@capebiologix.com . For Research Use only, unless otherwise indicated.

IMAGES

Cape Biologix Technologies

T+27 (0) 21 268 2835 W www.capebiologix.com

Unit 2, The Powder Mill, 5 Sunrise Circle, Ndabeni, Cape Town, South Africa 7405

Directors JM Lindeque · Reg No. 2020/185821/07 · VAT No. 4170291449

PtX™ Recombinant Protein A (HRP) ELISA Dose Response

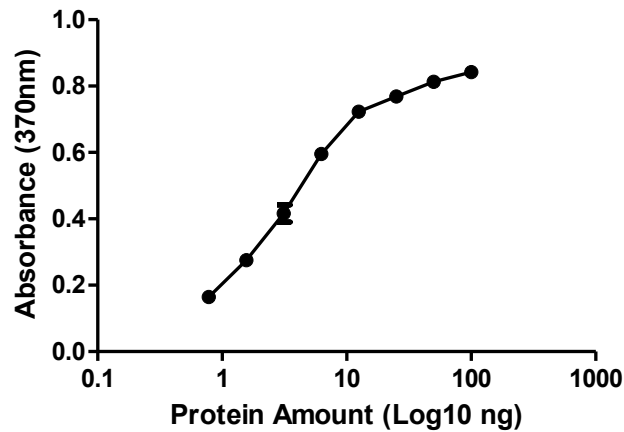


Figure 1. ELISA Dose Response curve showing increasing absorbance at 370 nm with increasing amounts of PtX™ Recombinant Protein A (HRP) used to detect Human IgG antigen.

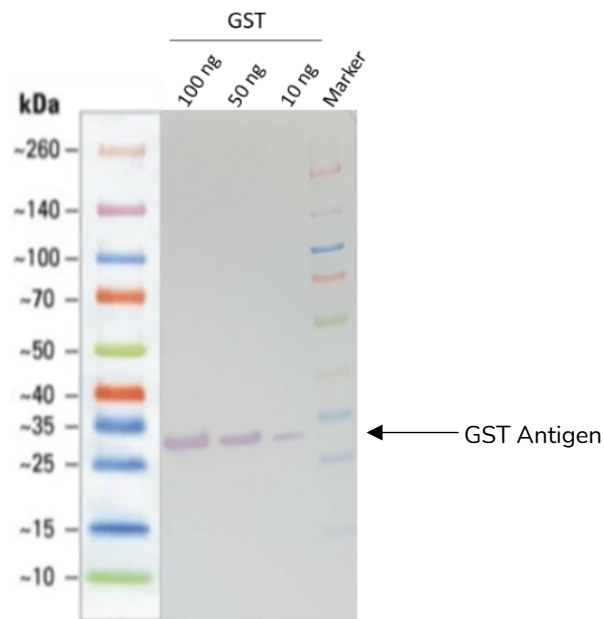


Figure 2. Western blot of decreasing amounts of GST antigen (28 kDa) detected with PtX™ Rabbit Anti-GST Recombinant Antibody at 1: 5 000 and PtX™ Recombinant Protein A (HRP) at 1: 1 000 as secondary detection probe.