

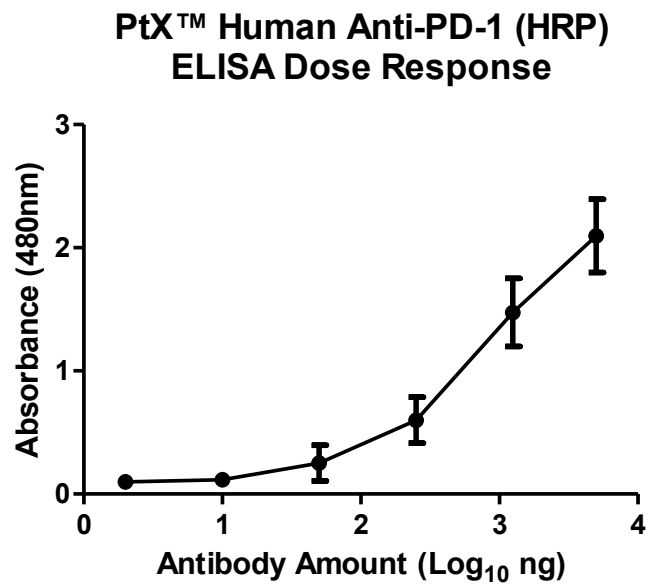
# Antibody Datasheet

## OVERVIEW AND PROPERTIES

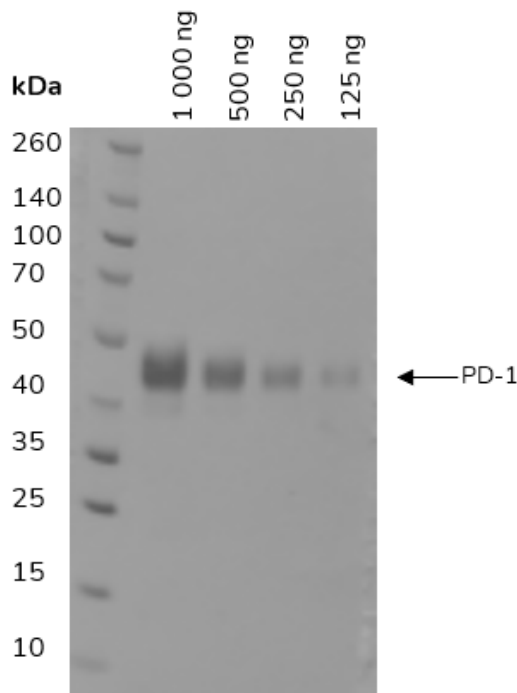
---

<b>Product Name</b>	PtX™ Human Anti-PD-1 (HRP) Recombinant Antibody
<b>Catalogue Number</b>	CBT_A0062
<b>Expression Host</b>	<i>Nicotiana benthamiana</i> plants
<b>Clonality</b>	Monoclonal, recombinant
<b>Species and Isotype</b>	Human IgG1
<b>Tag</b>	None
<b>Reporter Protein</b>	Horseradish Peroxidase
<b>Description</b>	This product is a full-length Human IgG1 recombinant antibody specific to PD-1. It was produced in <i>Nicotiana benthamiana</i> plants via <i>Agrobacterium tumefaciens</i> -mediated infiltration.
<b>Target Name</b>	Programmed cell death protein 1 (PD-1)
<b>Verified Applications</b>	Western blot, ELISA
<b>Dilution Range</b>	Western blot (1: 1 000 - 1: 2 000) ELISA (1: 1 000 – 1: 256 000)
<b>Tested Species Reactivity</b>	Human
<b>Concentration</b>	1.0 mg/ml
<b>Form</b>	Liquid
<b>Colour</b>	Clear with a faint red tinge
<b>Preparation</b>	Ready to use
<b>Storage</b>	Short term (up to one week): 2 – 8 °C Long term: Aliquot and store at – 20 °C Store immediately. Aliquot and avoid multiple freeze thaw cycles.
<b>Storage Buffer</b>	0.1 M Phosphate Buffered Saline, pH 7.4 Preservative: 50% Glycerol
<b>Purification Notes</b>	This product was purified using Protein A- affinity chromatography.
<b>Purity</b>	95 % as determined by SDS-PAGE
<b>General Notes</b>	If for any reason the product does not perform as specified, please contact our scientific support team for assistance by emailing <a href="mailto:techsupport@capebiologix.com">techsupport@capebiologix.com</a> . For Research Use only, unless otherwise indicated.

IMAGES



**Figure 1. ELISA Dose Response curve:** PtX™ Human Anti-PD-1 (HRP) Antibody from 0.02 – 50 ng/uL to detect 50 ng Human PD1/ PDCD1 Protein (His tag). Experiments were performed in triplicate, with error bars representing standard deviation (SD).



**Figure 2. Western blot:** decreasing amounts of human PD-1 protein (17.4 kDa, migrates at ~41.1 kDa due to glycosylation) detected with PtX™ Human Anti-PD-1 (HRP) Antibody at 1: 2 500.