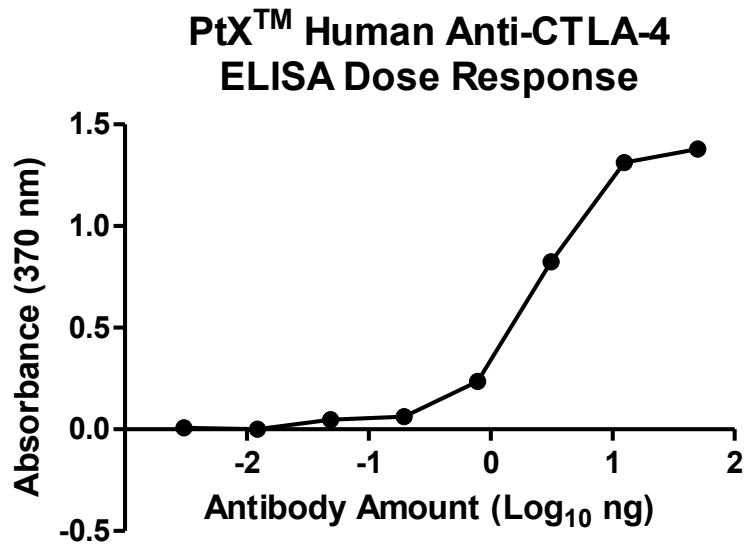


# Antibody Datasheet

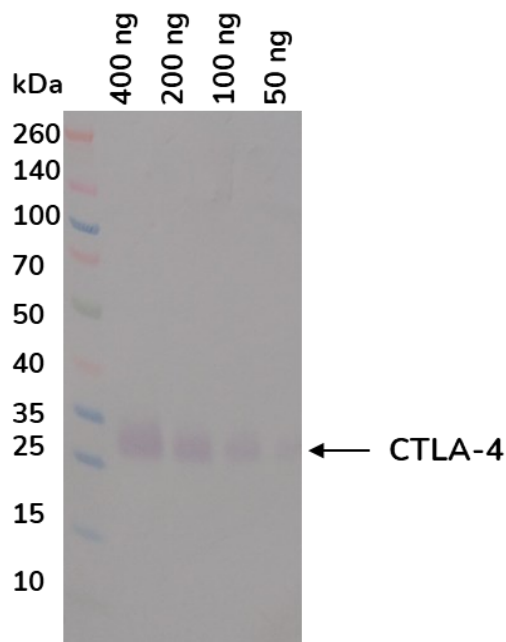
## OVERVIEW AND PROPERTIES

<b>Product Name</b>	PtX™ Human Anti-CTLA-4 Recombinant Antibody
<b>Catalogue Number</b>	CBT_A0049
<b>Expression Host</b>	<i>Nicotiana benthamiana</i> plants
<b>Clonality</b>	Monoclonal, recombinant
<b>Species and Isotype</b>	Human IgG1
<b>Tag</b>	None
<b>Reporter Protein</b>	None
<b>Description</b>	This product is a full-length Human IgG1 recombinant antibody specific to CTLA-4. It was produced in <i>Nicotiana benthamiana</i> plants via <i>Agrobacterium tumefaciens</i> -mediated infiltration.
<b>Target Name</b>	Cytotoxic T-lymphocyte-associated protein 4 (CTLA-4)
<b>Verified Applications</b>	Western blot, ELISA
<b>Dilution Range</b>	Western blot (1: 1 000 – 1: 2 000) ELISA (1: 2 000 – 1: 50 000)
<b>Tested Species Reactivity</b>	Human
<b>Concentration</b>	1.0 mg/ml
<b>Form</b>	Liquid
<b>Colour</b>	Clear
<b>Preparation</b>	Ready to use
<b>Storage</b>	Short term (up to one week): 2 – 8 °C Long term: Aliquot and store at – 20 °C Store immediately. Aliquot and avoid multiple freeze thaw cycles.
<b>Storage Buffer</b>	0.1 M Phosphate Buffered Saline, pH 7.4 Preservative: None
<b>Purification Notes</b>	This product was purified using Protein A- affinity chromatography.
<b>Purity</b>	≥ 95 % as determined by SDS-PAGE
<b>General Notes</b>	If for any reason the product does not perform as specified, please contact our scientific support team for assistance by emailing <a href="mailto:techsupport@capebiologix.com">techsupport@capebiologix.com</a> . For Research Use only, unless otherwise indicated.

IMAGES



**Figure 1.** ELISA Dose Response curve using PtX™ Human Anti-CTLA-4 Antibody from 0.5 – 0.0000305 ng/uL to detect 10 ng CTLA-4 antigen. Experiments were performed in triplicate, with error bars representing standard deviation (SD).



**Figure 2.** Western blot of decreasing amounts of CTLA-4 (22-27 kDa) detected with PtX™ Human Anti-CTLA-4 Antibody at 1: 1 000 and an HRP conjugated anti-human secondary antibody.