

Antibody Datasheet

OVERVIEW AND PROPERTIES

Product Name	PtX™ Human Anti-CD20 (1F5) Recombinant Antibody
Catalogue Number	CBT_A0030
Expression Host	<i>Nicotiana benthamiana</i> plants
Clonality	Monoclonal, recombinant
Species and Isotype	Human IgG1
Tag	None
Reporter Protein	None
Description	This product is a full-length Human IgG1 recombinant antibody specific to CD20 Antigen. It was produced in <i>Nicotiana benthamiana</i> plants via <i>Agrobacterium tumefaciens</i> -mediated infiltration.
Target Name	CD20
Verified Applications	ELISA
Dilution Range	ELISA (1: 250 -1: 96 000)
Tested Species Reactivity	Human
Concentration	1.0 mg/ml
Form	Liquid
Colour	Clear to light yellow
Preparation	Ready to use
Storage	Short term (up to one week): 2 – 8 °C Long term: Aliquot and store at – 20 °C Store immediately. Aliquot and avoid multiple freeze thaw cycles.
Storage Buffer	0.1 M Phosphate Buffered Saline, pH 7.4 Preservative: None
Purification Notes	This product was purified using Protein A- affinity chromatography.
Purity	≥ 95 % as determined by SDS-PAGE
General Notes	If for any reason the product does not perform as specified, please contact our scientific support team for assistance by emailing techsupport@capebiologix.com . For Research Use only, unless otherwise indicated.

IMAGES

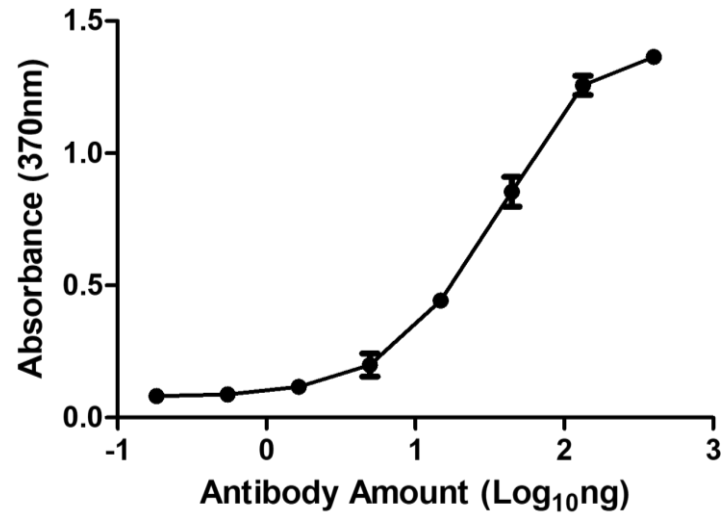
PtX™ Human Anti-CD20 (1F5) ELISA Dose Response

Figure 1. ELISA Dose Response curve using PtX™ Human Anti-CD20 (1F5) to detect coated CD20 antigen at 1 ng/μl and increasing concentrations of antibody. Experiments were performed in triplicate, with error bars representing standard deviation (SD).