

Antibody Datasheet

OVERVIEW AND PROPERTIES

Product Name	PtX™ Human Anti-Alpha Tubulin (F2C) (HRP)
Catalogue Number	CBT_A0054
Expression Host	<i>Nicotiana benthamiana</i> plants
Clonality	Monoclonal, recombinant
Species and Isotype	Human IgG1
Tag	None
Reporter Protein	Horseradish Peroxidase (HRP)
Description	This product is a full-length Human IgG1 recombinant antibody specific to Alpha Tubulin. It was produced in <i>Nicotiana benthamiana</i> plants via <i>Agrobacterium tumefaciens</i> -mediated infiltration.
Target Name	Alpha Tubulin
Verified Applications	Western blot, ELISA
Dilution Range	Western blot (1: 1000 - 1: 4000) ELISA (1: 500 – 1: 200 000)
Tested Species Reactivity	Human, Mouse
Concentration	1.0 mg/ml
Form	Liquid
Colour	Clear to light pink/red
Preparation	Ready to use
Storage	Short term (up to one week): 2 – 8 °C Long term: Aliquot and store at – 20 °C Store immediately. Aliquot and avoid multiple freeze thaw cycles.
Storage Buffer	0.1 M Phosphate Buffered Saline, pH 7.4 Preservative: None
Purification Notes	This product was purified using Protein A- affinity chromatography.
Purity	≥ 95 % as determined by SDS-PAGE
General Notes	If for any reason the product does not perform as specified, please contact our scientific support team for assistance by emailing techsupport@capebiologix.com . For Research Use only, unless otherwise indicated.

IMAGES

PtX™ Human Anti-Alpha Tubulin (HRP) Dose Response ELISA

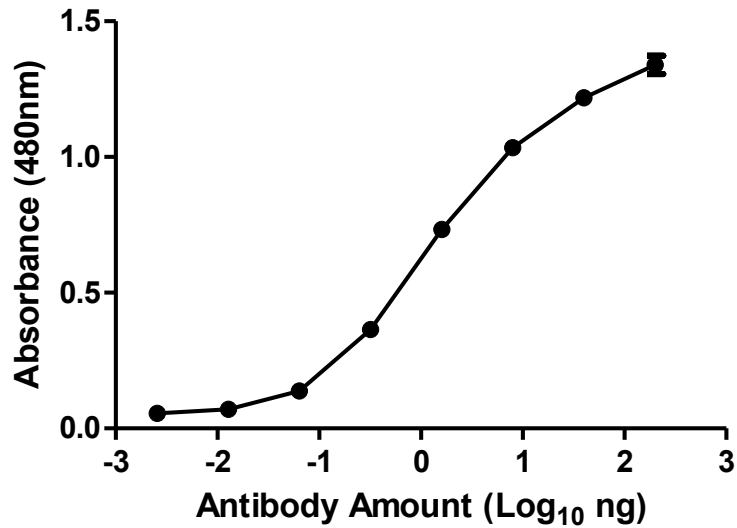


Figure 1. ELISA Dose Response curve using PtX™ Human Anti-Alpha Tubulin (HRP) Antibody from 2.0 – 0,0000256 ng/uL to detect 25 ng TUBA1A antigen. Experiments were performed in triplicate, with error bars representing standard deviation (SD).

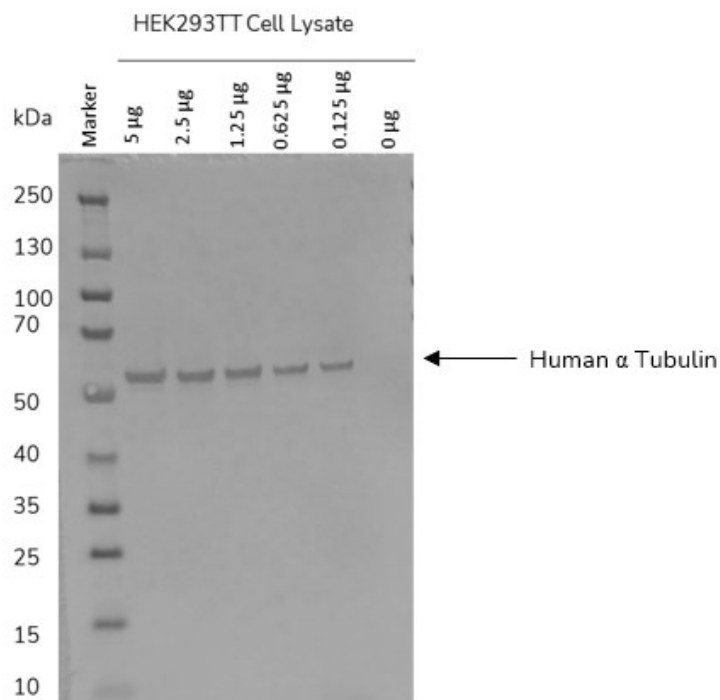


Figure 2. Western blot of decreasing amounts of Human Alpha (α) Tubulin (~50 kDa) detected with PtX™ Human Anti-Alpha Tubulin (HRP) at 1: 4 000.