

# Antibody Datasheet

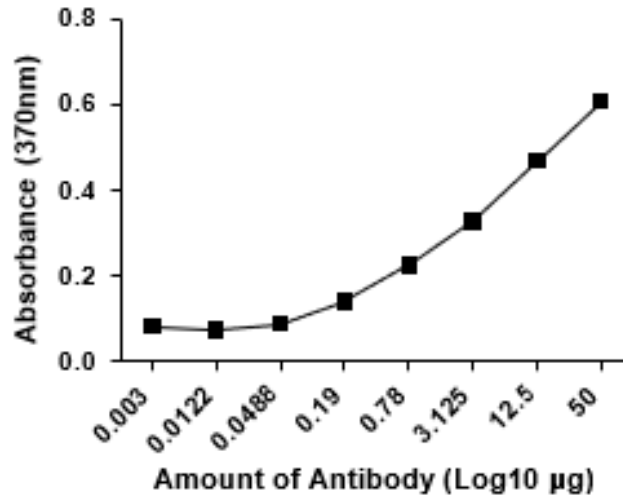
## OVERVIEW AND PROPERTIES

---

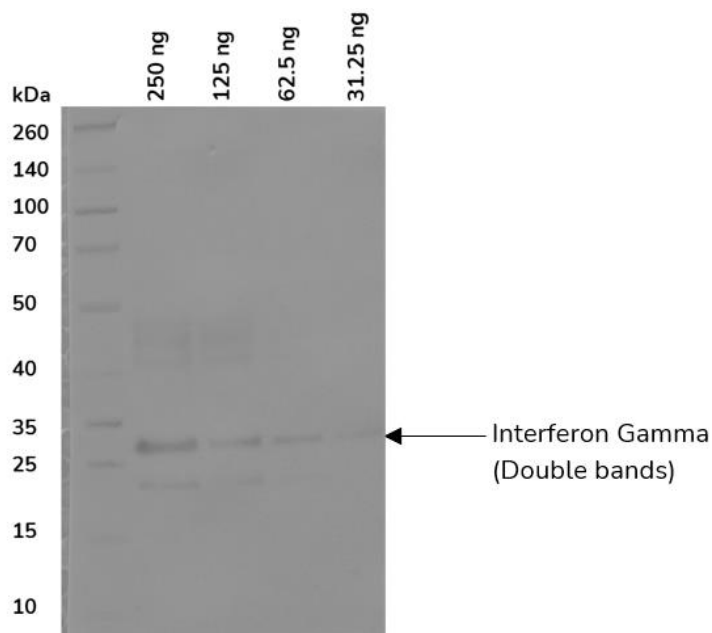
<b>Product Name</b>	PtX™ Mouse Anti-Interferon Gamma Recombinant Antibody
<b>Catalogue Number</b>	CBT_A0012
<b>Expression Host</b>	<i>Nicotiana benthamiana</i> plants
<b>Clonality</b>	Monoclonal, recombinant
<b>Species and Isotype</b>	Mouse IgG2a
<b>Tag</b>	None
<b>Reporter Protein</b>	None
<b>Description</b>	This product is a full-length Mouse IgG2a recombinant antibody specific to Interferon Gamma. It was produced in <i>Nicotiana benthamiana</i> plants via <i>Agrobacterium tumefaciens</i> -mediated infiltration.
<b>Target Name</b>	Interferon Gamma
<b>Verified Applications</b>	Western blot, ELISA
<b>Dilution Range</b>	Western blot (1: 2 000 – 1: 10 000) ELISA (1: 1 000 – 1: 5 000)
<b>Tested Species Reactivity</b>	Human
<b>Concentration</b>	1.0 mg/ml
<b>Form</b>	Liquid
<b>Colour</b>	Clear
<b>Preparation</b>	Ready to use
<b>Storage</b>	Short term (up to one week): 2 – 8 °C Long term: Aliquot and store at – 20 °C Store immediately. Aliquot and avoid multiple freeze thaw cycles.
<b>Storage Buffer</b>	0.1 M Phosphate Buffered Saline, pH 7.4 Preservative: None
<b>Purification Notes</b>	This product was purified using Protein A- affinity chromatography.
<b>Purity</b>	≥ 90 % as determined by SDS-PAGE
<b>General Notes</b>	If for any reason the product does not perform as specified, please contact our scientific support team for assistance by emailing <a href="mailto:techsupport@capebiologix.com">techsupport@capebiologix.com</a> . For Research Use only, unless otherwise indicated.

IMAGES

**PtX™ Mouse Anti-IFN-Gamma ELISA Dose Response**



**Figure 1.** ELISA Dose Response curve showing increasing absorbance at 370 nm with increasing amounts of antibody added to 96 well plate coated with 0.3 ng/µl of IFN antigen.



**Figure 2.** Western blot analysis of PtX™ Mouse Anti-IFN-Gamma. Lanes 2 – 5: Varying amounts of IFN-Gamma were run on the SDS-PAGE. Separated bands were transferred to the membrane and PtX™ Mouse Anti-IFN- Gamma (1: 2 500) was used to detect the antigen. The two bands of IFN- Gamma were visualized following the addition of anti-rabbit secondary antibody with HRP and substrate. Our antibody was able to detect antigen amounts upwards of 31 ng (Lane 5).